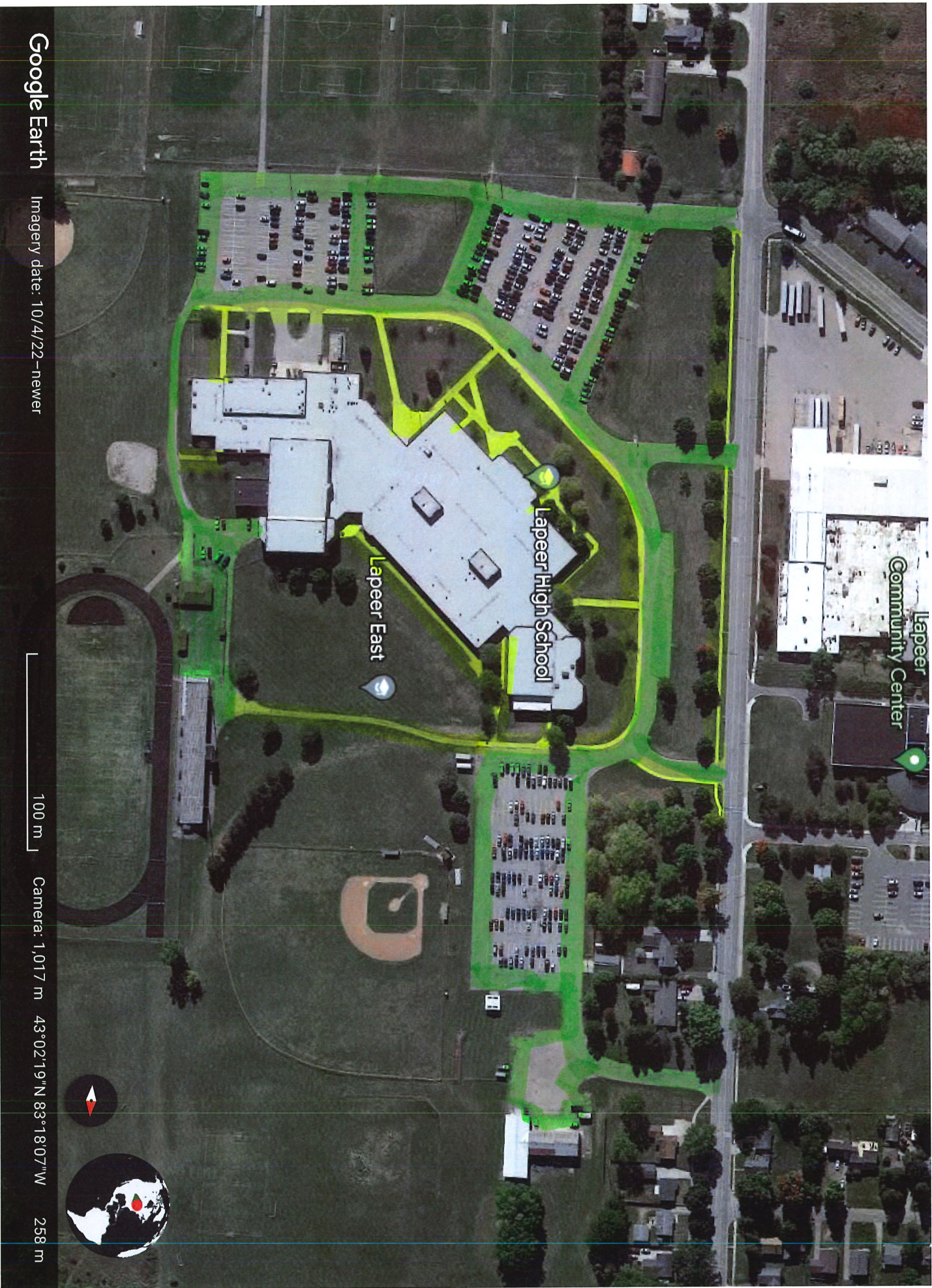


Google Earth Images

- Areas highlighted in yellow are sidewalks that need to be clear of snow
- Areas highlighted/outlined in green are lots that need to be plowed



Google Earth

Imagery date: 10/4/22 - newer

Lapeer High

100 m

Camera: 1,017 m 43°02'19"N 83°18'07"W

258 m





Google Earth

Imagery date: 10/4/22 - newer

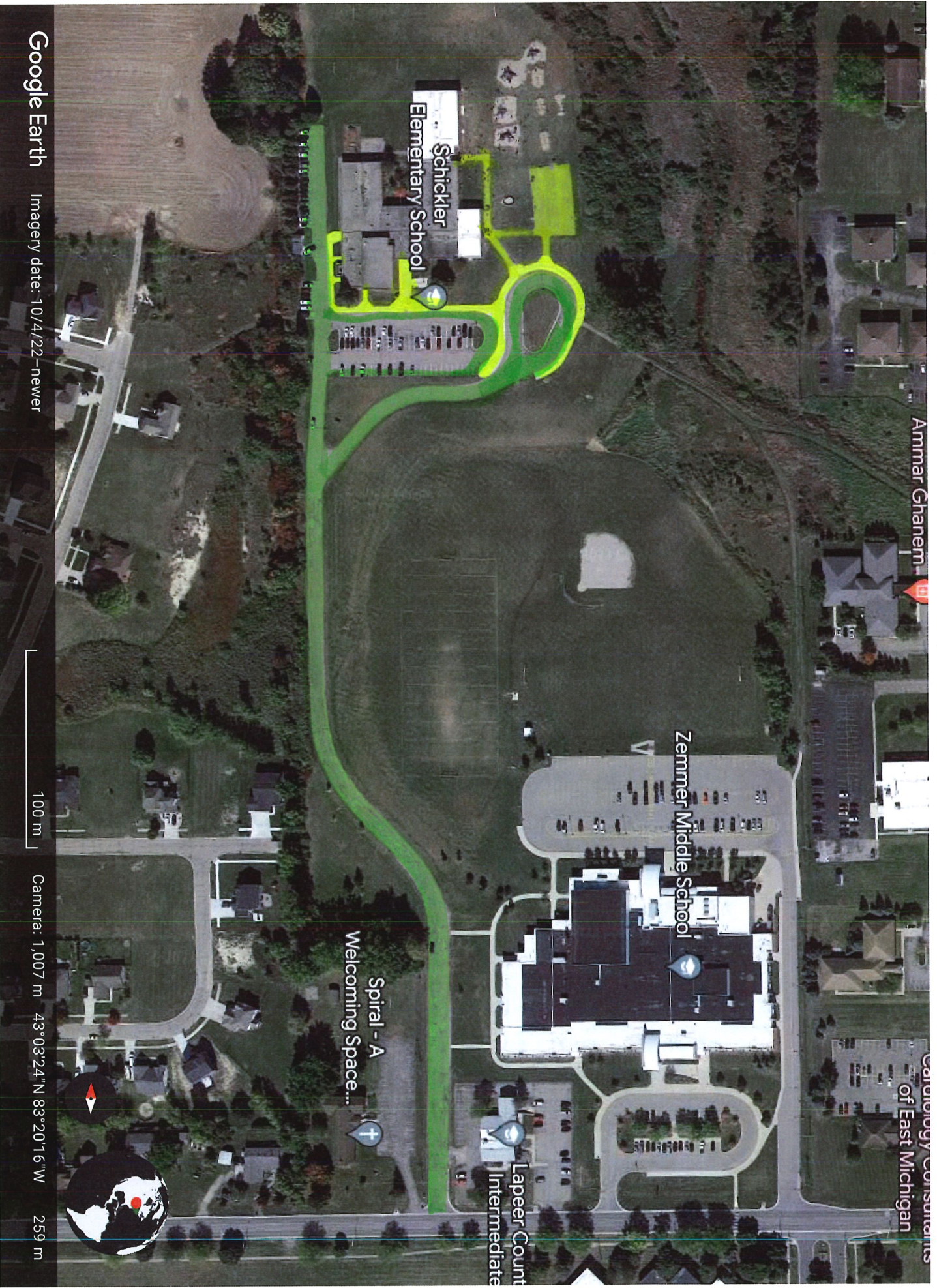
Murphy

40 m

Camera: 560 m 42°57'22"N 83°19'04"W

296 m





Google Earth

Imagery date: 10/4/22 - newer

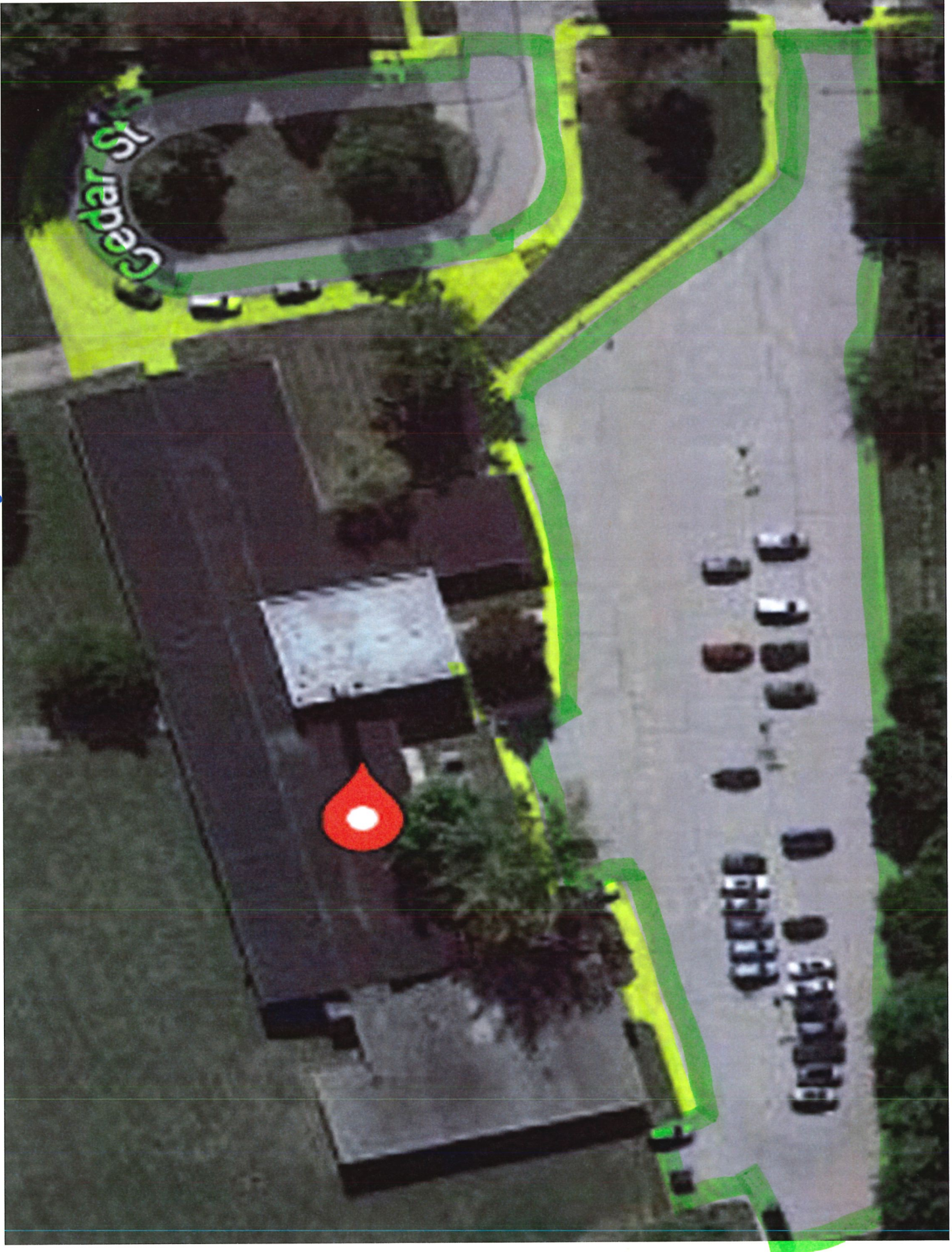
100 m

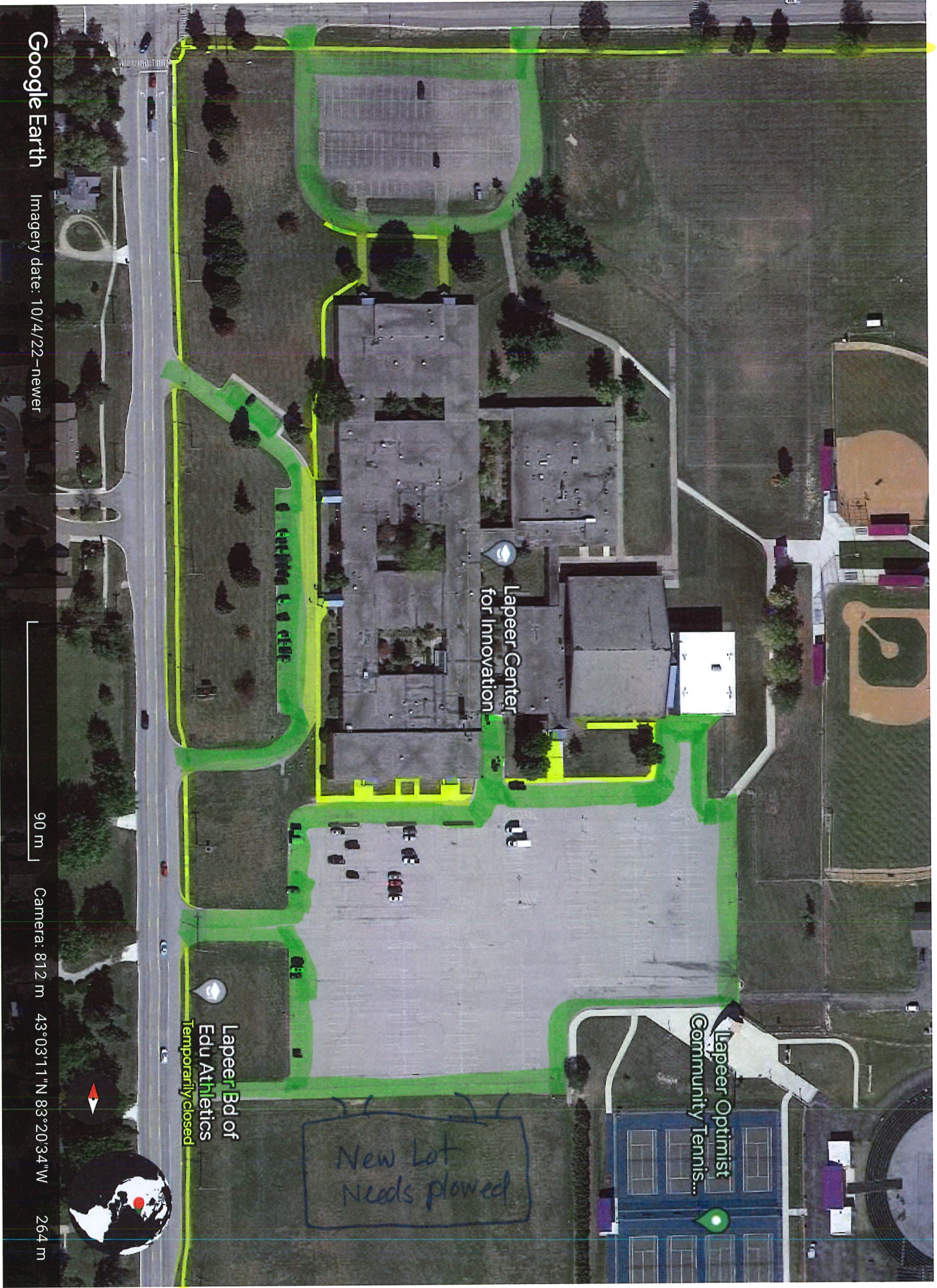
Camera: 1,007 m 43°03'24" N 83°20'16" W

259 m

Schickler

ASC





Google Earth

Imagery date: 10/4/22 - newer

Lapeer Center
for Innovation

Lapeer Optimist
Community Tennis...

Lapeer Bd of
Edu Athletics
Temporarily closed

New Lot
Needs plowed

90 m

Camera: 812 m

43°03'11"N 83°20'34"W

264 m

CFI



Google Earth

Imagery date: 10/4/22 - newer

40 m

Camera: 503 m 43°01'19"N 83°21'43"W

263 m

Crawford





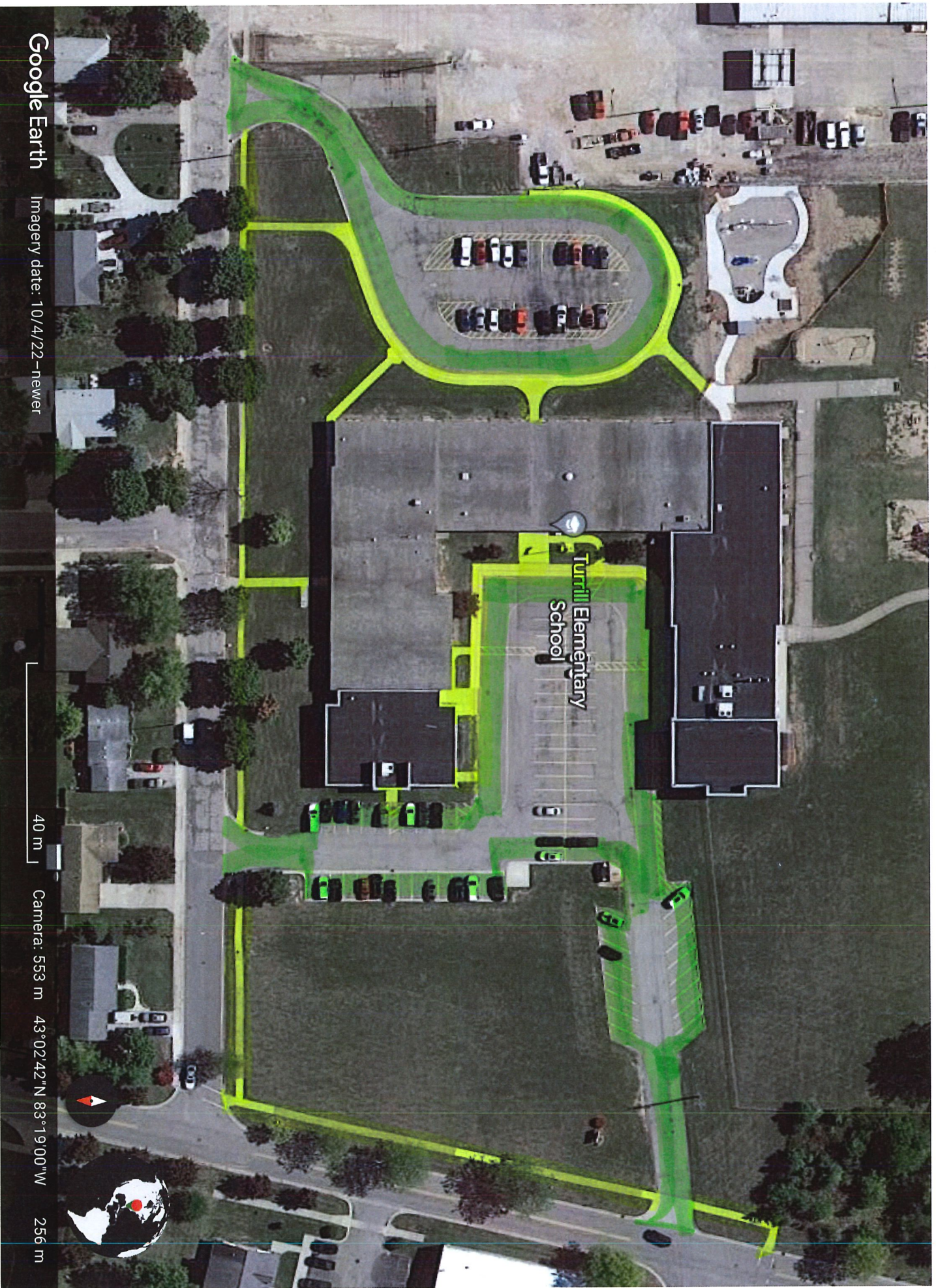
Elva Lynch Elementary School

Google Earth Imagery date: 10/4/22 - newer

40 m Camera: 519 m 43°05'20"N 83°16'44"W 253 m

Lynch





Google Earth

Imagery date: 10/4/22 - newer

Turrill Elementary School

Turrill

40 m

Camera: 553 m 43°02'42\" N 83°19'00\" W

256 m





Google Earth

Imagery date: 10/4/22 - newer

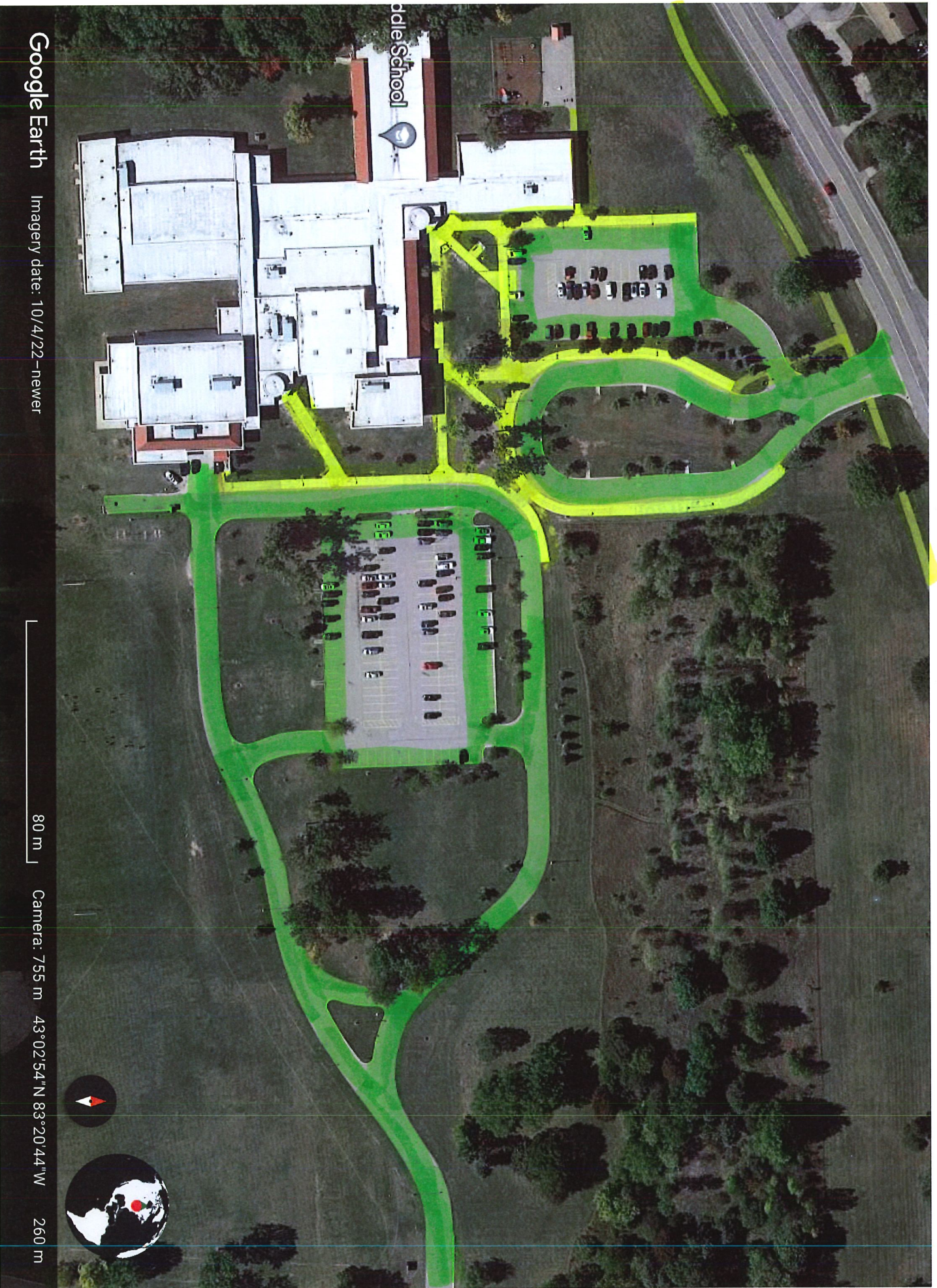
Bus Garage

40 m

Camera: 556 m 43°02'36" N 83°18'56" W

256 m





Google Earth

Imagery date: 10/4/22 - newer

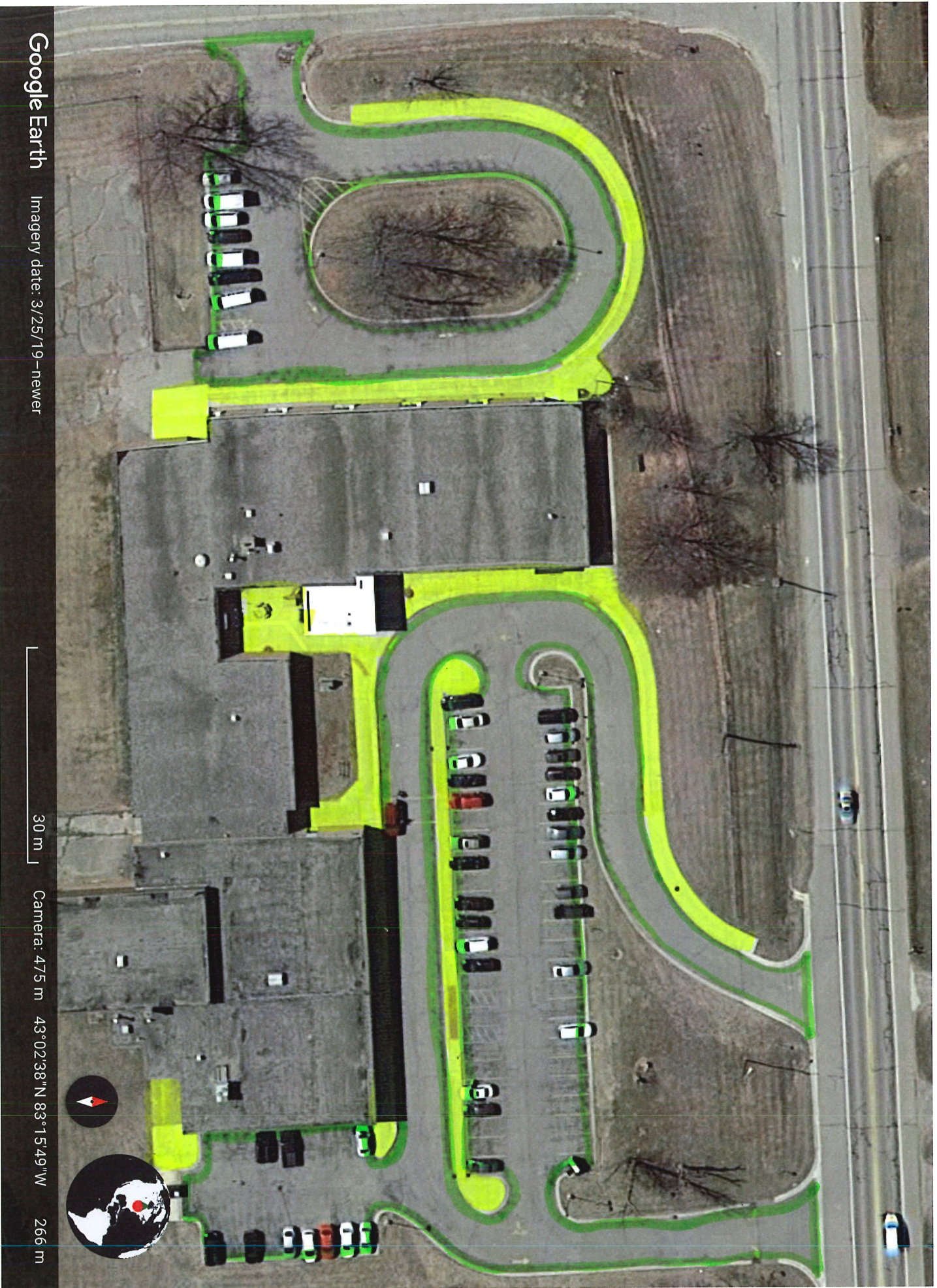
80 m

Camera: 755 m

43°02'54\"

260 m

Rolland - Warner



Google Earth

Imagery date: 3/25/19 - newer

30 m

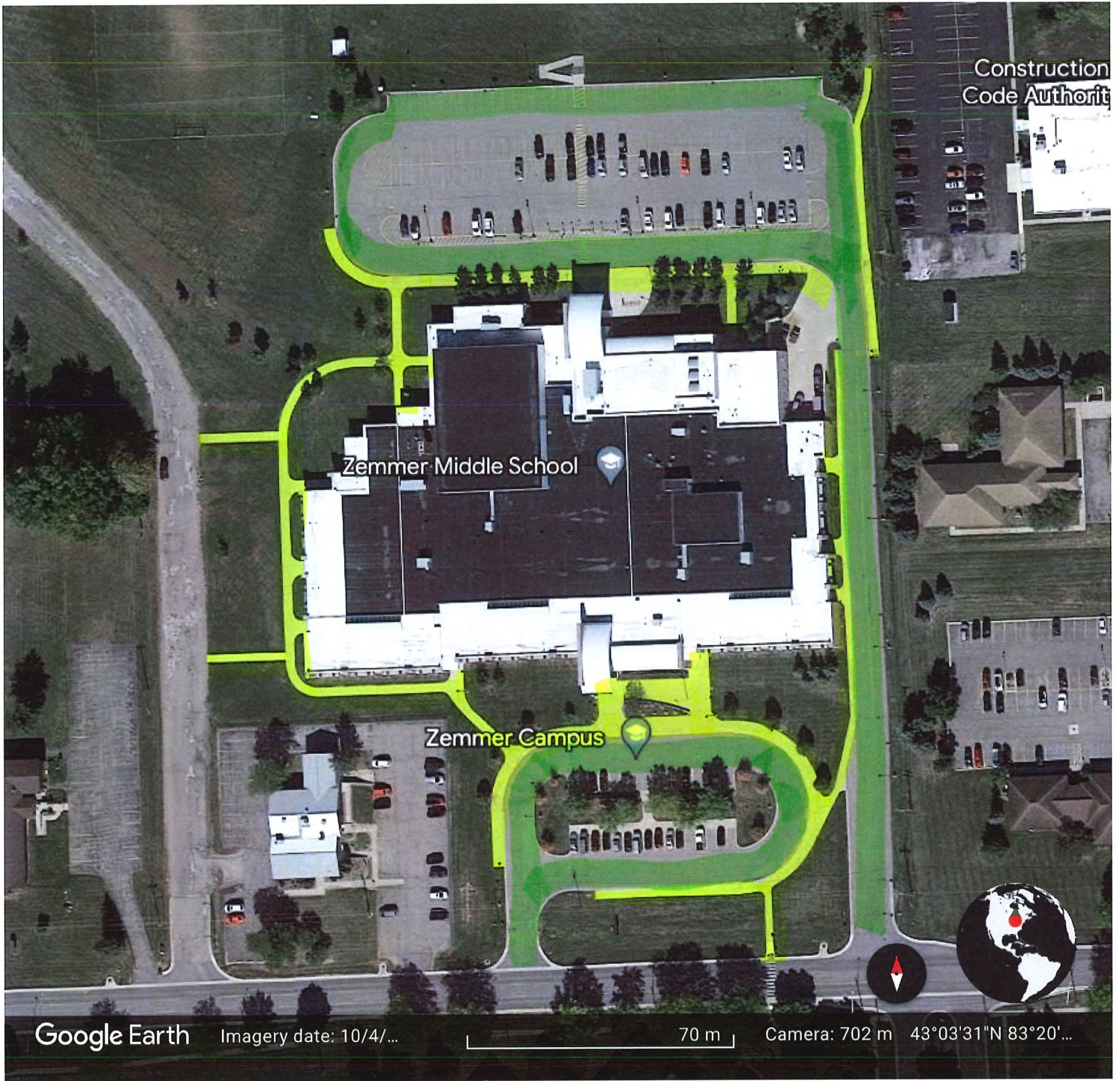
Camera: 475 m

43°02'38" N 83°15'49" W

266 m



Maple Grove



Zemmer



Google Earth

Imagery date: 10/4/22 - newer

Mayfield

40 m

Camera: 514 m 43°05'14"N 83°19'07"W

249 m